

**LUNENBURG COUNTY BOARD OF SUPERVISORS
160 COURTHOUSE SQUARE
LUNENBURG COURTS BUILDING, LUNENBURG, VIRGINIA**

September 12, 2019 Meeting

6:00PM

1. Call to Order
2. Invocation/Pledge of Allegiance: Supervisor Edmonds
3. Requests for Additions to the Agenda
4. Conflict of Interest Statements & Organizational Matters
5. Presentation of Eagle Scout Resolution - Brandon Allard
6. Consent Agenda:
 - A) Minutes of June 13th (revised) and August 8, 2019 Meeting
 - B) Warrants for Approval August 2019 (with June accruals)
 - C) Treasurer's Reports July 2019
7. Virginia Department of Transportation
 - A) Highway Safety Project - Update
8. Lunenburg County School Board
9. County Offices and Departments
 - A) Animal Control - Kennel Staffing Partnership
 - B) Animal Control - Truck Purchase
 - C) *Sheriff's Office-Emergency Services Capital Fund Expense Request*
10. Next Generation 9-1-1 Project
11. Planning and Economic Development Update
12. Nominations and Appointments
 - A) Social Services Advisory Board - Vacant Seats - Districts 1, 3, 4
 - B) Piedmont Senior Resources - Community Rep Vacant
13. Administrator's Update
 - A) Roof at VA Cooperative Extension
14. County Attorney Update
15. Closed Session Items (if necessary)
16. Other Business (per Board approval)
17. Adjournment

It is the intention of the Lunenburg County Board of Supervisors to comply with the Americans with Disabilities Act. Should you need special accommodations, please contact the County Administrator's Office at 434-696-2142 prior to the meeting date.

-- Tracy M. Gee, County Administrator



RESOLUTION OF ACHEIVEMENT

WHEREAS, Brandon L. Allard achieved the highest honor in scouting on April 4, 2019 and advanced to the rank of Eagle Scout; and

WHEREAS, Brandon L. Allard improved and renovated various areas of need to the building and grounds of the Victoria Presbyterian Church as his Eagle Scout Project; and

WHEREAS, Brandon L. Allard's primary focus of the project was replacement of old fencing; and

WHEREAS, in addition to the Eagle Scout Project, Brandon L. Allard has earned 32 merit badges during his scout career; and

NOW, THEREFORE, BE IT RESOLVED, that the Lunenburg County Board of Supervisors recognizes the accomplishments and determination of **Brandon L. Allard** in advancing to the rank of Eagle Scout at his Eagle Scout Court of Honor on July 12, 2019.

BE IT FURTHER RESOLVED, the Lunenburg County Board of Supervisors congratulates **Brandon L. Allard** on his achievement and offer best wishes for his future endeavors.

Adopted this 11th day of July 2019.

Charles R. Slayton, Chairman
Board of Supervisors

Consent Agenda:

- A) Minutes of June 13th (revised) and August 8, 2019 Meeting
- B) Warrants for Approval August 2019 (with June accruals)
- C) Treasurer's Reports July 2019

Revised June 15th minutes

GENERAL FUND Expenditures	Fiscal Year 2019 ADOPTED	Fiscal Year 2020 PROPOSED		
Board of Supervisors	49,320	49,320		
County Administration	234,030	245,630	241,730	
Professional Services	98,000	105,500	103,000	
Commissioner of the Revenue	212,200	215,050		
Treasurer	232,560	242,620	244,620	
Data Processing	90,000	70,000		
Electoral Board	39,940	49,365		
Registrar	79,715	86,650		
Circuit Court	11,400	11,300		
General District Court	6,000	5,400		
Magistrate	1,325	1,325		
Juvenile/Domestic Relations Court	81,900	77,600		
Clerk, Circuit Court	272,570	297,340		
Courthouse Security	16,400	19,500		
Victim Witness	71,115	71,115		
Commonwealth Attorney	293,140	301,110		
Sheriff's Department	1,241,520	1,271,800		
Volunteer Fire & Rescue/Grants	244,240	263,200		
Piedmont Regional Jail	430,000	440,000		
Building Inspector	90,863	93,020		
Animal Control	88,475	95,670		
Maintenance/Buildings	219,570	223,260		
Health Dept	110,000	110,000		
Medical Examiner	100	100		
Crossroads	53,000	53,000		
STEPS	5,000	0		
Madeline's House	2,000	2,000		
Planning/Zoning Permits	31,200	9,800		
Lunenburg Public Library System	150,274	150,274		
Commonwealth Reg Council	19,000	19,000		
Soil & Water Conservation	7,000	7,000		
Lunenburg Literacy	8,000	8,000		
SVCC	4,823	4,823		
Longwood Small Business	1,940	1,940		
SPCA	1,000	1,000		
VA's Retreat	4,500	5,000		
Town & County Bus	5,000	4,500		
Piedmont Sr. Resources	2,000	4,000	2,000	
Forestry Service	22,000	22,000		
Rec Sports Leagues	7,000	7,000		
People's Comm Center	500	500		
Victoria Community Ctr	500	500		
Kenbridge Comm Center	500	500		
VA Legal Aid Society	4,713	4,713		
VA's Growth Alliance	12,914	12,914		
Community Action Agency	16,474	19,500		
Community/Econ Dev. (Office)	68,575	59,000		
IDA Tax Incentives	55,000	55,000		
Cooperative Extension	43,370	45,000		
Refunds / DMV Stops	25,000	25,000		
Prop/Liability/LODA/WC Coverage	78,500	74,000	79,000	
Reserve for contingency	0	0		
Capital Improvements	100,000	100,000		
Total General Fund Operations	4,944,166	5,041,839	5,030,839	

Constitutional Offices-State Reimbursement	-1,319,972	-1,397,814		
Grants	-196,115	-211,115		
Transfer from Solid Waste Fund Balance	-180,000	-200,000		
Transfer from General Fund Reserve	-267,368	-379,132		
TOTAL GENERAL FUND REVENUES	-10,059,166	-10,408,172		

Economic Development Grants Fund		
Revenue: Grants and Fund Balance Transfer	-579,490	-552,490
Expenditures	579,490	552,490

School Fund		
State Sales Tax	-1,758,214	-1,861,174
State Funds	-9,391,474	-10,264,679
Federal Funds	-1,842,609	-1,748,892
County Funds	-3,740,000	-3,740,000
Other Funds	-468,724	-468,724
Total Revenue	-17,201,021	-18,083,469
Total Expenditures	17,201,021	18,083,469

Social Services Fund		
Revenue State	-1,000,000	-980,000
Local Funds	-152,000	-160,000
Total Revenue	-1,152,000	-1,140,000
Expenditures	1,152,000	1,140,000

Comprehensive Services Act		
Revenue State/Local	-705,000	-705,000
General Fund Transfer In	-240,000	-250,000
Total Revenue	-945,000	-955,000
Expenditures	945,000	955,000

Emergency Services Capital Equipment		
Revenue/Use of 911 Fund Balance	-115,000	-185,000
Expenditures	115,000	185,000

Project Lifesaver		
Revenue/Transfer IN	-800	-800
To Escrow	800	800

Voting Machine Fund		
Transfer from General Fund	-5,000	-5,000
To Escrow	5,000	5,000

Capital Outlay Fund		
Transfer in from Debt Service	-85,000	-100,000
Reserve for Capital Needs	85,000	100,000

Debt Service		
School Payment	-380,000	-380,000
Refunding Interest QSCB	-140,000	-140,000
Transfer in from Debt Fund Balance	-170,000	-25,000
General Fund Transfer In	-975,000	1,133,333
Total Revenue	-1,665,000	1,678,333
Debt Service School	1,065,000	1,064,333
Debt Service Courthouse	515,000	514,000
Transfer to Capital Outlay Fund	85,000	100,000
Total Expenditures Debt Service	1,665,000	1,678,333

TOTAL BUDGET SPECIAL FUNDS:	\$22,794,791	\$24,511,032
TOTAL COUNTY BUDGET:	\$32,853,957	\$34,919,204

Administrator Gee explained that in FY18 the Sheriff's Department had \$53,000 in General Fund operational budget vacancy savings approved for transfer to Emergency Services Capital Fund on 3/39/2018. The transfer was not completed. She requested action to balance the approved transaction.

Supervisor Edmonds made a motion, seconded by Supervisor Hankins and unanimously approved, to transfer \$53,000 of the General Fund Reserve to Emergency Services Capital.

Administrator Gee advised that Circuit Court Clerk Gordon Erby requested the Board accept \$22,000 from the Compensation Board and appropriate the funds to the Technology Trust Fund.

Supervisor Bacon made a motion, seconded by Supervisor Edmonds and unanimously approved, to accept \$22,000 from the Compensation Board and appropriate funds to the Technology Trust Fund.

LUNENBURG COUNTY BOARD OF SUPERVISORS
GENERAL DISTRICT COURTROOM
LUNENBURG COURTS BUILDING
LUNENBURG, VIRGINIA

DRAFT

Minutes of August 8, 2019 Meeting

The regularly scheduled meeting of the Lunenburg County Board of Supervisors was held on Thursday, August 8, 2019 at 6:00 pm in the General District Courtroom, Lunenburg Courts Building, Lunenburg, Virginia. The following members were present: Supervisors Edward Pennington, Frank Bacon, Charles R. Slayton, Alvester Edmonds, Robert Zava, County Administrator Tracy M. Gee, Deputy County Administrator Nicole Clark, and County Attorney Frank Rennie. Supervisors Mike Hankins and T. Wayne Hoover were absent.

Chairman Slayton called the meeting to order.

Supervisor Pennington provided the invocation and led the pledge of allegiance.

Chairman Slayton requested additions to the agenda from the Board and the public. County Attorney Rennie requested that an introduction of Mary O'Brien with Meridian Waste be added as 8A. Administrator Gee stated that the agenda listed the Next Generation 9-1-1 Project as 8A, however, that item would be delayed until September when Supervisor Hoover would be present.

Supervisor Edmonds made motion, seconded by Supervisor Bacon and unanimously approved, to accept the Consent Agenda to include the Minutes of the July 11, 2019 meeting, the Treasurer's June 2019 reports and the following Warrants for Approval:

Additions for June 2019 printed in July 2019:
(for inclusion in FY19 expenses)

	Accounts Payable: #57821-57905	\$ 82,548.45
July 2019:	Payroll: Direct Deposit	\$ 132,528.36
	Payroll Taxes Federal:	\$ 42,122.47
	Payroll Taxes State:	\$ 7,661.26
	Payroll VRS payment:	\$ 27,700.69
	Payroll ICMA-RC payment:	\$ 351.82
	Payroll Health Savings Deposits:	\$ 5,926.42
	Debt Service wire payments:	\$ 397,092.15
	Accounts Payable: #57906-58009	\$ <u>476,289.82</u>
	July Total:	\$ 1,089,672.99

The monthly VDOT report was provided.

School Superintendent Charles Berkley provided his monthly report. He noted that the school system has been busy preparing the facilities, equipment and vehicles for the start of school on August 19th. He advised that Open House would be held on Thursday, August 15th, from 1:00 p.m. to 6 p.m. at all schools. Superintendent Berkley invited the Board to attend Convocation to be held at Central High School on August

16th at 10:00 a.m. with lunch to follow. He stated that both elementary schools and the middle school would be able to offer free breakfast and lunch this year. The high school did not meet the criteria; however, they will apply again next year. Superintendent Berkley advised that all schools are again fully accredited. Assistant Superintendent James Abernathy provided the financial reports. He advised that they are bringing FY2018-19 to a close. They are still awaiting \$58,092.76 in State Sales Tax Revenue. Mr. Abernathy noted that they will be requesting a transfer of carryover funds to the text book fund. They would like to use the funds in the upcoming school year to purchase new English textbooks as they did the previous year with math textbooks. Mr. Abernathy advised that the end of year ADM for FY2018-19 was 1497. They are projecting about 30 students less for the upcoming school year as the upcoming senior class has about 70 students; the typical class size is 100-110.

County Attorney Rennie introduced Mary O'Brien, Chief Marketing Officer with Meridian Waste. Ms. O'Brien thanked the Board for welcoming her from Georgia. She stated that she looks forward to working with Tim Webb and Rob Guidry as well as the Board and Planning Commission as they pursue updating the current Conditional Use Permit.

Administrator Gee updated the Board on the FY2018-19 budget. She advised that the Board of Supervisors budget was over by \$116.08 due to extra money towards the purchase of a refurbished copier for the Administration Office. The Voting Machine Fund was over by \$557.18 due to paying the machine maintenance agreement in the amount of \$5,557.18. This annual payment is now coming out of their general fund budget. The Sheriff's Office has a budget savings of \$89,245.45 and would like to request it be carried over for capital use. Administrator Gee advised that the CSA fund is currently over by \$158,000, however, she is still awaiting revenue for June expenses that were paid in June and July. A supplement request will be submitted and reimbursements should arrive in October.

Administrator Gee requested the below budget adjustments for FY2018-2019:

- Increase Registrar's part-time salaries and wages line item by \$3,435.25 to cover additional hours worked by the new part-time Deputy Registrar while training after the untimely death of the previous Deputy Registrar
- Increase the Clerk of the Circuit Court's salaries and wages line item by \$14,495.80 as it was under budgeted
- The 911 Fund transfer in from Fund Balance was \$99,650, but the amount needed is \$101,920 (increase the transfer by \$2,270)

Supervisor Bacon made a motion, seconded by Supervisor Pennington and unanimously approved, to approve the above budget adjustments for FY2018-2019.

Administrator Gee requested the below budget adjustments for FY2019-2020:

- Carryover funds for Fund 316
 - \$18,357.79 Victoria Fire and Rescue
 - \$20,000.00 Kenbridge Fire Department
 - \$39,729.29 Sheriff's Office
- The Sheriff requests \$35,000 of carryover funds from his operational budget to Emergency Services Capital budget for FY20
- Carryover funds of \$58,700 from Capital Improvements line item to go towards paving project to be completed in September and the final payments for the Tax Office building repairs

Supervisor Bacon made a motion, seconded by Supervisor Edmonds and unanimously approved, to approve the above budget adjustments for FY2019-2020.

Mr. Glenn Millican, County Planner presented his monthly report. He advised that he has been working on developing a local plan to help build a revenue stream to have available fund for grants without affecting the budget or taxpayers. He noted that there are 2 pending CUP cases that he will bring before the Board upon recommendation from the Planning Commission.

Supervisor Edmonds recommended Sarah Hadley of 2484 Rash Maddux Road, Blackstone, VA 23824, to serve on the Social Services Advisory Board, representing District #6-Hounds Creek.

Supervisor Zava made a motion, seconded by Supervisor Pennington and unanimously approved, to appoint Ms. Sarah Hadley on the Social Services Advisory Board, representing District #6-Hounds Creek, for the unexpired term ending 12/31/2020.

Administrator Gee provided her monthly report. She commented that Airport Manager Leroy Baker requested an upgrade for the airport lawnmower purchase. The upgrade would include more comfortable and stable seating as well as assist the operator in climbing on the mower. The amount of the upgrade is \$769.90. Administrator Gee reminded the Board that the Department of Aviation had approved a grant to be used towards the purchase of the mower. The DOAV grant provides funding for half of the cost of the mower with the county funding the other half of the purchase to match the DOAV grant funds. The DOAV approved to increase the grant amount to cover half of the upgrade. The county will need to fund the other half of the upgrade amount.

Supervisor Bacon made a motion, seconded by Supervisor Edmonds and unanimously approved, to increase the purchase amount of the lawnmower for the airport by \$769.90, with the DOAV providing grants funds for half of the increase and the county matching the grant by funding half of the increase.

Administrator Gee reported that the resurfacing of the metal façade and roof at the Tax Building was complete and the awnings should be installed the following week. She commented that she is also obtaining pricing on grading of the yard as water is pooling around the building as well as leaking in the back of Treasurer Amona Currin's office. She reported that the roof at the Co-op Extension Office building was damaged during a storm earlier in the summer. She continued that insurance would cover the cost to repair the damaged section; however, she believes the entire roof should be replaced as repairing just a small section will not guarantee the integrity of the roof. Supervisor Bacon commented that insurance should cover the replacement of the entire roof as they will be liable for any water damage that might occur inside. Administrator Gee noted that she will contact the insurance company again.

County Attorney Rennie reported that the county had received an application to revise the Conditional Use Permit for Container First Services/Lunenburg Landfill. He added that the request was to increase the allowed tonnage and height restrictions. He advised that additional information was being reviewed and the application would be reviewed by the Planning Commission in the near future.

Supervisor Bacon made a motion, seconded by Supervisor Edmonds and unanimously approved, to enter Closed Session citing Virginia Code Section §2.2-3711A1 Personnel and §2.2-3711A3 Acquisition or Disposition of Publicly Held Property.

CERTIFICATION OF CLOSED SESSION MEETING

WHEREAS, the Board of Supervisors of Lunenburg County, Virginia ("Board") convened a Closed Session Meeting on this date pursuant to an affirmative recorded vote in accordance with the provisions of the Freedom of Information Act; and

WHEREAS, Section §2.2-3712 of the Code of Virginia, 1950, as amended, requires a certification by the Board that such Closed Meeting was conducted in conformity with Virginia law.

NOW, THEREFORE, BE IT RESOLVED that the Board hereby certifies that, to the best of each member's knowledge, (i) only public business matters lawfully exempted from Open Meeting requirements by Virginia law were discussed in the Closed Meeting to which this certification resolution applies, and (ii) only such public business matters as were identified in the motion convening the Closed Meeting were heard, discussed or considered by the Board.

VOTING YES

Supervisor Bacon
Supervisor Edmonds
Supervisor Pennington
Supervisor Slayton
Supervisor Zava

VOTING NO

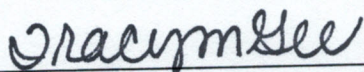
ABSENT

Supervisor Hankins
Supervisor Hoover

Supervisor Bacon made a motion, seconded by Supervisor Edmonds and unanimously approved, to return to Open Session.

Supervisor Bacon made a motion, seconded by Supervisor Edmonds and unanimously approved, to appropriate \$2,400 in Economic Development Funds for the storage of business equipment related to Safety Technologies, Inc.

Supervisor Bacon made a motion, seconded by Supervisor Edmonds and unanimously approved, to adjourn.



Tracy M. Gee, Clerk
County Administrator

Charles R. Slayton, Chairman
Board of Supervisors

BOARD OF SUPERVISORS

Charles R. Slayton, CHAIRMAN
Election District 4

Frank W. Bacon, VICE-CHAIRMAN
Election District 3

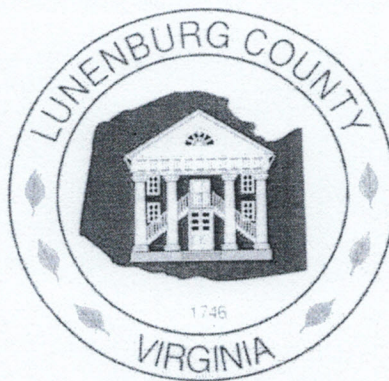
T. Wayne Hoover
Election District 1

Mike Hankins
Election District 2

Edward Pennington
Election District 5

Alvester L. Edmonds
Election District 6

Robert G. Zava
Election District 7



Lunenburg County Administration
11413 Courthouse Road
Lunenburg, VA 23952

Tracy M. Gee
County Administrator

Telephone: (434) 696-2142
Facsimile: (434) 696-1798

August 31, 2019

Lunenburg County Board of Supervisors
11413 Courthouse Road
Lunenburg, VA 23952

Honorable County Supervisors:

The following warrants, including accounting for all voided checks are listed according to Code of Virginia § 15.2-1243 and § 15.2-1244 requiring your approval:

Additions for June 2019 printed in August 2019:
(for inclusion in FY19 expenses)

Accounts Payable: #58065-58083	\$ 124,400.08
August 2019: Payroll Direct Deposit:	\$ 131,522.81
Payroll Taxes Federal:	\$ 41,561.83
Payroll Taxes State:	\$ 7,567.49
Payroll VRS payment:	\$ 27,700.69
Payroll ICMA-RC payment:	\$ 351.82
Payroll Health Savings Deposits:	\$ 5,926.42
Accounts Payable: #58010-58064, 58084-58135	<u>\$ 177,675.40</u>
August Total:	\$ 392,306.46

Sincerely,

Tracy M. Gee
County Administrator

FY 18/19

AP100B 8/16/2019 LUNENBURG COUNTY
TIME-14:04:53

A/P CHECK REGISTER
Check Date - 8/14/2019

CHECK#	VENDOR	CLASS	DATE	AMOUNT	DISCOUNT
58065	414 BLAKE LINDA	000	8/14/2019	486.00	.00
58066	848 BRIDGES TREATMENT CENTER	000	8/14/2019	4,625.00	.00
58067	101 CENTRA HEALTH INC.	000	8/14/2019	39,736.50	.00
58068	428 COMFORT TELECOMMUNICATION	000	8/14/2019	530.47	.00
58069	15 DAGNER DONNA J	000	8/14/2019	292.69	.00
58070	369 DISCOVERY SCHOOL OF VA	000	8/14/2019	1,650.00	.00
58071	818 DOMINION YOUTH SERVICES	000	8/14/2019	10,575.00	.00
58072	812 ESRI	000	8/14/2019	400.00	.00
58073	851 FULCRUM COUNSELORS, LLC	000	8/14/2019	135.00	.00
58074	842 GEARA GROUP, INC.	000	8/14/2019	4,523.52	.00
58075	30 GRAFTON SCHOOL INC	000	8/14/2019	17,020.00	.00
58076	829 HARBOR POINT BEHAVIORAL	000	8/14/2019	11,780.00	.00
58077	211 KIDS PEACE CORPORATION	000	8/14/2019	10,630.18	.00
58078	285 KOFI FILE TECHNOLOGIES, INC.	000	8/14/2019	9,555.00	.00
58079	96 PIEDMONT REGIONAL JUV.	000	8/14/2019	6,600.00	.00
58080	104 SECURE HAVEN	000	8/14/2019	4,386.60	.00
58081	337 STEPS, INC.	000	8/14/2019	540.00	.00
58082	134 TOWN OF BLACKSTONE	000	8/14/2019	517.78	.00
58083	837 YOUTH PATHWAYS	000	8/14/2019	416.34	.00
	CLASS TOTAL			124,400.08	.00
	ACH TOTAL			.00	
	CHECK TOTAL			124,400.08	
	EPY TOTAL			.00	
	FINAL TOTAL			124,400.08	.00

I HEREBY APPROVE THIS REGISTER FOR PAYMENT WITH EXCEPTIONS LISTED BELOW OR PREVIOUSLY DOCUMENTED.
THE TOTAL 124,400.08 - EQUALS THE WEEKLY LOG SHEET TOTALS AS ADJUSTED.

8-16-19
DATE

Draymiller
COUNTY ADMINISTRATOR

8-16-19

Charles R. Staylor

FY 19/20

AP100B 8/21/2019 LUNENBURG COUNTY
TIME-13:06:16

A/P CHECK REGISTER
Check Date - 8/21/2019

CHECK#	VEND#	VENDOR	CLASS	DATE	AMOUNT	DISCOUNT
58084	291	CHUCK'S AUTO&TRUCK REPAIR	000	8/21/2019	4,410.46	.00
		CLASS TOTAL			4,410.46	.00
		ACH TOTAL			.00	
		CHECK TOTAL			4,410.46	
		EPY TOTAL			.00	
		FINAL TOTAL			4,410.46	.00

I HEREBY APPROVE THIS REGISTER FOR PAYMENT WITH EXCEPTIONS LISTED BELOW OR PREVIOUSLY DOCUMENTED.
THE TOTAL 4,410.46 EQUALS THE WEEKLY LOG SHEET TOTALS AS ADJUSTED.

8-20-19
DATE

8-21-19

Wraymiller
COUNTY ADMINISTRATOR

Charles R. Slayton

A/P CHECK REGISTER
Check Date - 8/15/2019

AP100B 8/16/2019 LUNENBURG COUNTY
TIME-10:16:30

CHECK#	VEND#	VENDOR	CLASS	DATE	AMOUNT	DISCOUNT
58010	283	ADAMS PATRICIA M	000	8/15/2019	135.50	.00
58011	59	AT&T MOBILITY	000	8/15/2019	181.32	.00
58012	472	BAKER LEROY	000	8/15/2019	75.00	.00
58013	125	BARNES REPAIR SHOP INC	000	8/15/2019	20.00	.00
58014	139	BENCHMARK COMMUNITY BANK	000	8/15/2019	110.27	.00
58015	999999	BENCHMARK COMMUNITY BANK	000	8/15/2019	25,000.00	.00
58016	414	BLAKE LINDA	000	8/15/2019	486.00	.00
58017	852	BLINCOE ADAM & SARAI	000	8/15/2019	125.44	.00
58018	746	CANON SOLUTIONS AMERICA	000	8/15/2019	110.00	.00
58019	10	CENTURYLINK ANALOG	000	8/15/2019	1,951.56	.00
58020	291	CHUCK'S AUTO&TRUCK REPAIR	000	8/15/2019	61.75	.00
58021	377	CLARK NICOLE A.	000	8/15/2019	25.79	.00
58022	53	CLEMENT DIANA W	000	8/15/2019	1,346.77	.00
58023	52	CLEMENT ROBERT E	000	8/15/2019	50.00	.00
58024	293	COMMISSIONER OF THE	000	8/15/2019	100.00	.00
58025	999999	CORVA OFFICE ACCREDITATIO	000	8/15/2019	12,979.26	.00
58026	58	COWAN GATES PC	000	8/15/2019	360.00	.00
58027	440	CPI	000	8/15/2019	13,250.00	.00
58028	124	CROSSROADS COMMUNITY	000	8/15/2019	458.33	.00
58029	259	DIAMOND PAPER COMPANY INC	000	8/15/2019	218.35	.00
58030	44	DIAMOND SPRINGS WATER INC	000	8/15/2019	4,300.41	.00
58031	46	DOMINION ENERGY VIRGINIA	000	8/15/2019	300.00	.00
58032	568	ERBY GORDON F.	000	8/15/2019	330.00	.00
58033	642	FARMVILLE NEWSMEDIA	000	8/15/2019	83.80	.00
58034	66	FUEL FREEDOM CARD	000	8/15/2019	50.05	.00
58035	24	GALLS, LLC	000	8/15/2019	1,225.00	.00
58036	67	GCR COMPANY	000	8/15/2019	375.00	.00
58037	807	HHM PORTA TOILET LLC	000	8/15/2019	846.27	.00
58038	71	IBM CORPORATION	000	8/15/2019	211.97	.00
58039	78	KENBRIDGE OFFICE SUPPLY	000	8/15/2019	76.96	.00
58040	77	KENBRIDGE SUPPLY COMPANY	000	8/15/2019	1,428.77	.00
58041	75	KENBRIDGE TIRE	000	8/15/2019	282.84	.00
58042	286	KEY OFFICE SUPPLY INC	000	8/15/2019	325.00	.00
58043	461	LGA OF VA INC.	000	8/15/2019	83.00	.00
58044	83	LUNENBURG ANIMAL HOSPITAL	000	8/15/2019	15,950.00	.00
58045	90	NEW GENERATION	000	8/15/2019	100.00	.00
58046	360	PEGRAM, PHILLIP	000	8/15/2019	3,387.30	.00
58047	95	PIEDMONT REGIONAL JAIL	000	8/15/2019	7,125.00	.00
58048	96	PIEDMONT REGIONAL JUV.	000	8/15/2019	200.00	.00
58049	769	SANGOMA TECHNOLOGIES	000	8/15/2019	29.61	.00
58050	849	SMYTH PROPERTIES	000	8/15/2019	186.50	.00
58051	511	SOUTHERN OFFICE MACHINES	000	8/15/2019	1,672.00	.00
58052	652	SOUTHSIDE MESSENGER, THE	000	8/15/2019	600.00	.00
58053	106	SOUTHSIDE REGIONAL	000	8/15/2019	53.41	.00
58054	107	STANDBY SYSTEMS INC	000	8/15/2019	4,150.64	.00
58055	443	THARPE JAMES C	000	8/15/2019	40.00	.00
58056	209	THYSSENKRUPP ELEVATOR	000	8/15/2019	2,570.00	.00
58057	195	TREASURER OF VIRGINIA	000	8/15/2019	9,161.60	.00
58058	220	TREASURER OF VIRGINIA	000	8/15/2019	300.00	.00
58059	999999	TRI-COUNTY OPE	000	8/15/2019	59.05	.00
58060	999999	VA DEPT OF TRANSPORTATION	000	8/15/2019		
58061	113	VERIZON	000	8/15/2019		

AP100B 8/16/2019 LUNENBURG COUNTY
TIME-10:16:30

A/P CHECK REGISTER
Check Date - 8/15/2019

CHECK#	VENDOR	CLASS	DATE	AMOUNT	DISCOUNT
58062	117 WALLACE AUTO PARTS	000	8/15/2019	169.99	.00
58063	361 WARD ANDREW S.	000	8/15/2019	100.00	.00
58064	173 WILCO JANITORIAL SUPPLIES	000	8/15/2019	408.60	.00
	CLASS TOTAL			114,968.21	.00
	ACH TOTAL			.00	
	CHECK TOTAL			114,968.21	
	EPY TOTAL			.00	
	FINAL TOTAL			114,968.21	.00

I HEREBY APPROVE THIS REGISTER FOR PAYMENT WITH EXCEPTIONS LISTED BELOW OR PREVIOUSLY DOCUMENTED.
THE TOTAL 114,968.21 - EQUALS THE WEEKLY LOG SHEET TOTALS AS ADJUSTED.

8-15-19
DATE

Draymssee
COUNTY ADMINISTRATOR

8-16-19

Charles R. Saylor

A/P CHECK REGISTER
Check Date - 8/29/2019

AP100B 8/29/2019 LUNENBURG COUNTY
TIME-13:49:20

CHECK#	VEND#	VENDOR	CLASS	DATE	AMOUNT	DISCOUNT
58085	179	AFLAC	000	8/29/2019	1,584.79	.00
58086	711	ALLSTATE BENEFITS	000	8/29/2019	586.24	.00
58087	177	ANTHEM BCBS	000	8/29/2019	24,352.00	.00
58088	122	BAI MUNICIPAL SOFTWARE	000	8/29/2019	4,087.00	.00
58089	202	BEN FRANKLIN PRINTING CO	000	8/29/2019	152.85	.00
58090	371	BUG BUSTERS PEST CONT, INC	000	8/29/2019	248.00	.00
58091	675	CENTRAL DISTRICT COR	000	8/29/2019	90.00	.00
58092	10	CENTURYLINK ANALOG	000	8/29/2019	101.13	.00
58093	119	DATAWARE, INC.	000	8/29/2019	549.96	.00
58094	999999	DAVIS LINDA	000	8/29/2019	65.00	.00
58095	481	DE LAGE LANDEN	000	8/29/2019	137.00	.00
58096	191	DEARBORN NATIONAL LIFE	000	8/29/2019	162.96	.00
58097	44	DIAMOND SPRINGS WATER INC	000	8/29/2019	184.95	.00
58098	46	DOMINION ENERGY VIRGINIA	000	8/29/2019	1,530.99	.00
58099	225	FARMVILLE WHOLESAL	000	8/29/2019	23.16	.00
58100	66	FUEL FREEDOM CARD	000	8/29/2019	2,796.18	.00
58101	999999	Gregoric Gail A	000	8/29/2019	30.00	.00
58102	840	GARRETT'S GROUND MAINTENA	000	8/29/2019	1,575.00	.00
58103	751	HEALTH EQUITY	000	8/29/2019	82.60	.00
58104	158	JACK & SON	000	8/29/2019	703.80	.00
58105	78	KENBRIDGE OFFICE SUPPLY	000	8/29/2019	975.93	.00
58106	77	KENBRIDGE SUPPLY COMPANY	000	8/29/2019	4.99	.00
58107	75	KENBRIDGE TIRE	000	8/29/2019	530.35	.00
58108	261	KIES, INC.	000	8/29/2019	348.00	.00
58109	333	KORMAN SIGNS	000	8/29/2019	1,048.56	.00
58110	999999	Long Patricia L	000	8/29/2019	30.00	.00
58111	651	LEGALSHIELD	000	8/29/2019	18.95	.00
58112	254	LEWIS WELDING &	000	8/29/2019	11,005.00	.00
58113	999999	LOVE QUANTRES U	000	8/29/2019	33.02	.00
58114	83	LUNENBURG ANIMAL HOSPITAL	000	8/29/2019	1,033.00	.00
58115	999999	Mattox Ronald E	000	8/29/2019	30.00	.00
58116	649	MECKLENBURG ELECTRIC	000	8/29/2019	110.19	.00
58117	794	MILLICAN GLENN	000	8/29/2019	150.42	.00
58118	827	MINNESOTA LIFE INSURANCE	000	8/29/2019	3.20	.00
58119	999999	Newcomb Dorothy	000	8/29/2019	30.00	.00
58120	266	PARSONS CAROLYN A	000	8/29/2019	330.00	.00
58121	721	PATRIOT SIGNAGE, INC.	000	8/29/2019	135.00	.00
58122	275	PETTIT DARLENE DBA	000	8/29/2019	25.95	.00
58123	94	PETTY CASH FUND	000	8/29/2019	8.00	.00
58124	999999	ROSS BRANDON	000	8/29/2019	40.00	.00
58125	999999	Spencer Lonnie Leon	000	8/29/2019	30.00	.00
58126	511	SOUTHERN OFFICE MACHINES	000	8/29/2019	19.19	.00
58127	135	SOUTHSIDE ELECTRIC COOP	000	8/29/2019	307.86	.00
58128	755	TREASURER OF VIRGINIA	000	8/29/2019	262.00	.00
58129	464	UNIVERSITY OF VIRGINIA	000	8/29/2019	80.00	.00
58130	507	VACORP	000	8/29/2019	61.37	.00
58131	183	VALIC	000	8/29/2019	1,750.00	.00
58132	114	VICTORIA AUTOMOTIVE	000	8/29/2019	76.89	.00
58133	111	VIRGINIA CREDIT UNION	000	8/29/2019	200.00	.00
58134	999999	Watson Richard S	000	8/29/2019	30.00	.00
58135	809	WILLIAMS AMY S.	000	8/29/2019	545.25	.00
		CLASS TOTAL			58,296.73	.00
		ACH TOTAL			.00	
		CHECK TOTAL			58,296.73	
		EPY TOTAL			.00	

FINAL TOTAL . 58,296.73 .00
I HEREBY APPROVE THIS REGISTER FOR PAYMENT WITH EXCEPTIONS LISTED BELOW OR PREVIOUSLY DOCUMENTED.
THE TOTAL 58,296.73- EQUALS THE WEEKLY LOG SHEET TOTALS AS ADJUSTED.

8-29-19
DATE

Wraggins
COUNTY ADMINISTRATOR

8-29-19

Charles R. Stuyf

-TREASURER TAX COLLECTION RATE SCHEDULE REPORT-
THRU 8/31/2019

DEPT	TAXES	PPTRA	ABATEMENTS	NET TAX	PAYMENTS	OTHER ADJS	NET PAYMENTS	NET A/R
RE2011 1	3179753.87		3703.76-	3176050.11	3129111.30-	44417.73-	3173529.03-	2521.08
RE2011 1	32.40			32.40	32.40		32.40	100.00
HALF TOTALS=	3179786.27		3703.76-	3176082.51	3129143.70-	44417.73-	3173561.43-	2521.08
DEPT TOTALS=	3179786.27		3703.76-	3176082.51	3129143.70-	44417.73-	3173561.43-	2521.08
RE2012 1	1600051.66		3676.46-	1596375.20	1586158.95-	9145.60-	1595304.55-	1070.65
RE2012 1	1600051.66		3676.46-	1596375.20	1586158.95-	9145.60-	1595304.55-	1070.65
HALF TOTALS=	1604714.92		7011.79-	1597703.13	1595942.63-	664.60-	1596607.23-	1095.90
HALF TOTALS=	1604714.92		7011.79-	1597703.13	1595942.63-	664.60-	1596607.23-	1095.90
DEPT TOTALS=	3204766.58		10688.25-	3194078.33	3182101.58-	9810.20-	3191911.78-	2166.55
RE2013 1	1615975.85		7652.80-	1608323.05	1592330.73-	14772.52-	1607103.25-	1219.80
RE2013 1	1615975.85		7652.80-	1608323.05	1592330.73-	14772.52-	1607103.25-	1219.80
HALF TOTALS=	1615710.67		8899.41-	1606811.26	1603934.29-	1657.17-	1605591.46-	1219.80
HALF TOTALS=	1615710.67		8899.41-	1606811.26	1603934.29-	1657.17-	1605591.46-	1219.80
DEPT TOTALS=	3231686.52		16552.21-	3215134.31	3196265.02-	16429.69-	3212694.71-	2439.60
RE2014 1	1621662.15		5053.32-	1616608.83	1603081.30-	12265.17-	1615346.47-	1262.36
RE2014 1	1621662.15		5053.32-	1616608.83	1603081.30-	12265.17-	1615346.47-	1262.36
HALF TOTALS=	1617319.15		6491.18-	1610827.97	1608274.41-	1290.85-	1609565.26-	1262.71
HALF TOTALS=	1617319.15		6491.18-	1610827.97	1608274.41-	1290.85-	1609565.26-	1262.71
DEPT TOTALS=	3238981.30		11544.50-	3227436.80	3211355.71-	13556.02-	3224911.73-	2525.07
RE2015 1	1632536.00		4152.15-	1628383.85	1613913.38-	11933.22-	1625846.60-	2537.25
RE2015 1	1632536.00		4152.15-	1628383.85	1613913.38-	11933.22-	1625846.60-	2537.25
HALF TOTALS=	1624504.36		4775.16-	1619729.20	1614652.76-	2138.98-	1616791.74-	2937.46
HALF TOTALS=	1624504.36		4775.16-	1619729.20	1614652.76-	2138.98-	1616791.74-	2937.46
DEPT TOTALS=	3257040.36		8927.31-	3248113.05	3228566.14-	14072.20-	3242638.34-	5474.71
RE2016 1	1639263.91		5406.99-	1633856.92	1614958.37-	15242.97-	1630201.34-	3655.58
RE2016 1	1639263.91		5406.99-	1633856.92	1614958.37-	15242.97-	1630201.34-	3655.58
HALF TOTALS=	1630250.23		6458.28-	1623791.95	1617207.68-	2550.70-	1619758.38-	4033.57
HALF TOTALS=	1630250.23		6458.28-	1623791.95	1617207.68-	2550.70-	1619758.38-	4033.57
DEPT TOTALS=	3269514.14		11865.27-	3257648.87	3232166.05-	17793.67-	3249959.72-	7689.15
RE2017 1	1643831.43		3555.53-	1640275.90	1613219.98-	12785.71-	1626005.69-	14270.21
RE2017 1	1643831.43		3555.53-	1640275.90	1613219.98-	12785.71-	1626005.69-	14270.21
HALF TOTALS=	1643267.95		5233.00-	1638034.95	1618252.48-	1864.84-	1620117.32-	17917.63
HALF TOTALS=	1643267.95		5233.00-	1638034.95	1618252.48-	1864.84-	1620117.32-	17917.63
DEPT TOTALS=	3287099.38		8788.53-	3278310.85	3231472.46-	14650.55-	3246123.01-	32187.84

-TREASURER TAX COLLECTION RATE SCHEDULE REPORT-
THRU 8/31/2019 PAYMENTS OTHER ADJS NET PAYMENTS NET A/R %COLLECTED

DEPT	H	CLS	TAXES	PPTRA	ABATEMENTS	NET TAX	PAYMENTS	OTHER ADJS	NET PAYMENTS	NET A/R	%COLLECTED
RE2018	1	RE	1752770.83		4385.70-	1748385.13	1707573.27-	9704.99-	1717278.26-	31106.87	98.22
HALF	TOTALS=		1752770.83		4385.70-	1748385.13	1707573.27-	9704.99-	1717278.26-	31106.87	98.22
HALF	TOTALS=		1746313.47		6107.60-	1740205.87	1702198.78-	2782.60-	1704981.38-	35224.49	97.98
DEPT	TOTALS=		3499084.30		10493.30-	3488591.00	3409772.05-	12487.59-	3422259.64-	66331.36	98.10
RE2019	1	RE	1748764.37		1996.66-	1746767.71	1661179.14-	11977.79-	1673156.93-	73610.78	95.79
HALF	TOTALS=		1748764.37		1996.66-	1746767.71	1661179.14-	11977.79-	1673156.93-	73610.78	95.79
HALF	TOTALS=		1748764.37		2664.18-	1746100.19	135177.65-	2635.91-	137813.56-	1608286.63	7.89
DEPT	TOTALS=		3497528.74		4660.84-	3492867.90	1796356.79-	14613.70-	1810970.49-	1681897.41	51.85
RE	TOTALS =		29665487.59		87223.97-	29578263.62	27617199.50-	157831.35-	27775030.85-	1803232.77	93.90

COMP	TOTALS=		29665487.59		87223.97-	29578263.62	27617199.50-	157831.35-	27775030.85-	1803232.77	93.90
------	---------	--	-------------	--	-----------	-------------	--------------	------------	--------------	------------	-------

-TREASURER TAX COLLECTION RATE SCHEDULE REPORT-
THRU 8/31/2019

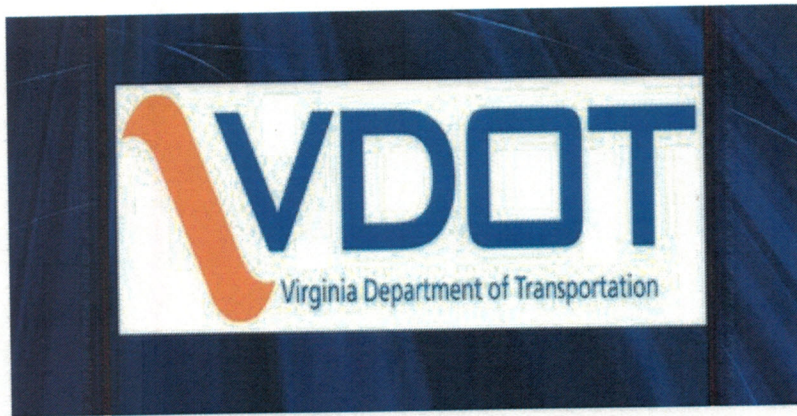
DEPT	H	CLS	TAXES	PPTRA	ABATEMENTS	NET TAX	PAYMENTS	OTHER ADJS	NET PAYMENTS	NET A/R	
PP2014	1	MH	12073.86		331.36-	11742.50	11358.72-	135.26-	11493.98-	248.52	97.88
	1	MR	40972.52		929.94-	40042.58	40019.92-	15.16-	40035.08-	7.50	99.98
	1	MT	147418.32		1130.48	146287.84	137855.11-	881.10	136974.01-	9313.83	93.63
	1	PP	1442787.62	523143.53-	59042.67	860601.67	842100.79-	3236.44-	84537.23-	15264.44	98.23
	1	VL	236725.00		5970.00-	230755.00	225198.68-	584.74-	225783.42-	4971.58	97.85
	1	XX	702.45		702.45	702.45	702.45-		702.45-		100.00
HALF TOTALS=			1880679.77	523143.53-	67404.20-	1290132.04	1257235.67-	3090.50-	1260326.17-	29805.87	97.69
	2	H2	12073.85		331.36-	11742.49	11438.68-	48.45-	11487.13-	255.36	97.83
	2	P2	1437984.65	523711.28-	56163.74-	858109.63	840935.05-	121.13	840813.92-	17295.71	97.98
	2	R2	40547.47		464.34-	40083.13	39996.43-		39996.43-	86.70	99.78
	2	T2	144065.53		1130.48-	142935.05	133621.22-		133621.22-	9313.83	93.48
	2	X2	702.45		702.45	702.45	702.45-		702.45-		100.00
HALF TOTALS=			1635373.95	523711.28-	58089.52-	1053572.75	1026693.83-	72.68	1026621.15-	26951.60	97.44
DEPT TOTALS=			3516053.72	1046854.81-	125494.12-	2343704.79	2283929.50-	3017.82-	2286947.32-	56757.47	97.58
PP2015	1	MH	12079.83		252.70-	11827.13	11413.99-	163.10-	11577.09-	250.04	97.89
	1	MR	41822.20		3167.59-	38654.61	38575.25-	77.86-	38653.11-	1.50	100.00
	1	MT	152155.17		4416.68	147739.09	138668.26-		138668.26-	9070.83	93.86
	1	PP	1471338.46	531867.22-	44402.24-	895069.00	869141.70-	3819.13-	872960.83-	22108.17	97.53
	1	VL	237615.00		7390.00-	230225.00	225492.95-	512.05-	226005.00-	4220.00	98.17
	1	XX	736.74		320.77-	415.97	415.97-		415.97-		100.00
HALF TOTALS=			1915747.40	531867.22-	59949.38-	1323930.80	1283708.12-	4572.14-	1288280.26-	35650.54	97.31
	2	H2	12053.20		252.70-	11800.50	11477.48-	58.92-	11536.40-	264.10	97.76
	2	P2	1452571.92	527532.96-	40642.53-	884396.43	859413.70-	1465.61-	86089.31-	23517.12	97.34
	2	R2	41292.52		2701.58	38590.54	38585.02-	4.02-	38589.04-	1.50	100.00
	2	T2	143082.42		4416.68	138666.34	129595.51-		129595.51-	9070.83	93.46
	2	X2	736.73		320.76-	415.97	415.97-		415.97-		100.00
HALF TOTALS=			1649736.79	527532.96-	48334.05-	1073869.78	1039487.68-	1528.55-	1041016.23-	32853.55	96.94
DEPT TOTALS=			3565484.19	1059400.18-	108283.43-	2397800.58	2323195.80-	6100.69-	2329296.49-	68504.09	97.14
PP2016	1	MH	12253.84		115.53-	12138.51	11652.95-	214.24-	11867.19-	271.32	97.76
	1	MR	38011.08		935.65-	37075.43	36897.23-	175.74-	37072.97-		99.99
	1	MT	162468.35		1373.88	161094.47	151149.88-	1211.08-	152360.96-	8733.51	94.58
	1	PP	1540793.19	527504.52-	38803.32-	974485.35	943906.18-	8959.71-	952865.89-	21619.46	97.78
	1	VL	234810.00		5265.00-	229545.00	225025.40-	1041.72-	226067.12-	3477.88	98.48
	1	XX	458.85		458.85	458.85	458.85-		458.85-		100.00
HALF TOTALS=			1988795.31	527504.52-	46493.18-	1414797.61	1369090.49-	11602.49-	1380692.98-	34104.63	97.59
	2	H2	12224.91		115.33-	12109.58	11832.84-	5.79	11827.05-	282.53	97.67
	2	P2	1525868.82	522933.45-	38668.32-	964267.05	939871.43-	1237.76-	941109.19-	23157.86	97.60
	2	R2	38010.77		935.64-	37075.13	37056.24-	16.43-	37072.67-	2.46	99.99
	2	T2	158029.62		1373.88-	156655.74	147830.48-		147830.48-	8825.26	94.37
	2	VL	175.00		175.00	175.00	175.00-		175.00-		100.00
	2	X2	458.85		458.85	458.85	458.85-		458.85-		100.00
HALF TOTALS=			1734767.97	522933.45-	41093.17-	1170741.35	1137224.84-	1248.40-	1138473.24-	32268.11	97.24
DEPT TOTALS=			3723563.28	1050437.97-	87586.35-	2595538.96	2506315.33-	12850.89-	2519166.22-	66372.74	97.43
PP2017	1	MH	12872.18		245.67-	12626.51	12058.89-	245.29-	12304.18-	322.33	97.45
	1	MR	42441.11		76.28-	42364.83	42206.44-	156.89-	42363.33-	1.50	100.00

-TREASURER TAX COLLECTION RATE SCHEDULE REPORT-
THRU 8/31/2019

DEPT	H	CLS	TAXES	PPTRA	ABATEMENTS	NET TAX	PAYMENTS	OTHER ADJS	NET PAYMENTS	NET A/R
PP2017	1	MT	171927.14		31.50-	171895.64	163627.47-	209.17-	163836.64-	8059.00
	1	PP	1610384.22	529731.34-	39736.73-	1040916.15	1010537.78-	8159.86-	1018697.64-	22218.51
	1	VL	241790.00		6235.00-	235555.00	230298.48-	886.52-	231185.00	4370.00
	1	XX	458.85			458.85	458.85-		458.85-	100.00
HALF TOTALS=			2079873.50	529731.34-	46325.18-	1503816.98	1459187.91-	9657.73-	1468845.64-	34971.34
	2	H2	12726.96		114.57-	12612.39	12063.53-	199.51-	12263.04-	349.35
	2	P2	1595034.45	527399.50-	32224.23-	1035410.72	1008618.54-	456.00-	1009074.54-	26336.18
	2	R2	42408.50		43.94-	42364.56	42312.90-	9.60-	42322.50-	42.06
	2	T2	163971.52		31.50-	163940.02	157594.63-		157594.63-	6345.39
	2	X2	458.85			458.85	458.85-		458.85-	100.00
HALF TOTALS=			1814600.28	527399.50-	32414.24-	1254786.54	1221048.45-	665.11-	1221713.56-	33072.98
DEPT TOTALS=			3894473.78	1057130.84-	78739.42-	2758603.52	2680236.36-	10322.84-	2690559.20-	68044.32
PP2018	1	MH	11558.85		63.27-	11495.58	10957.68-	139.12-	11096.80-	398.78
	1	MR	44487.95		3369.91-	41118.04	40797.05-	77.94-	40874.99-	243.05
	1	MT	167475.55		6025.61-	161449.94	154155.93-	63.01-	154218.94-	7231.00
	1	PP	1624760.15	525229.46-	43319.46-	1056211.23	1023579.44-	7398.85-	1030978.29-	25232.94
	1	VL	248355.00		7865.00-	240490.00	232249.99-	929.10-	233179.09-	7310.91
	1	XX	894.60		383.25-	511.35	511.35-		511.35-	100.00
HALF TOTALS=			2097532.10	525229.46-	61026.50-	1511276.14	1462251.44-	8608.02-	1470859.46-	40416.68
	2	H2	11558.64		63.27-	11495.37	10945.60-	20.80-	10966.40-	528.97
	2	P2	1620085.14	523676.97-	43315.24-	1053092.93	1012719.22-	1488.38-	1014207.60-	38885.33
	2	R2	44274.05		3369.91-	40904.14	40329.00-		40329.00-	575.14
	2	T2	167475.30		6025.61-	161449.69	145901.24-		145901.24-	15548.45
	2	X2	894.60		383.25-	511.35	511.35-		511.35-	100.00
HALF TOTALS=			1844287.73	523676.97-	53157.28-	1267453.48	1210406.41-	1509.18-	1211915.59-	55537.89
DEPT TOTALS=			3941819.83	1048906.43-	114183.78-	2778729.62	2672657.85-	10117.20-	2682775.05-	95954.57
PP2019	1	MH	11688.10		19.00-	11669.10	997.70-	104.75-	10102.45-	1566.65
	1	MR	44973.51		16.80-	44956.71	42109.11-	26.49-	42135.60-	2821.11
	1	MT	166085.54		4454.34-	161631.20	145845.13-	50.01-	145895.14-	15736.06
	1	PP	1789770.58	527213.41-	82929.74-	1179627.43	1030434.03-	8178.39-	1038612.42-	141015.01
	1	VL	250755.00		7370.00-	243385.00	199930.74-	878.28-	200809.02-	82.51
	1	XX	511.35			511.35	511.35-		511.35-	100.00
HALF TOTALS=			2263784.08	527213.41-	94789.88-	1641780.79	1428828.06-	9237.92-	1438065.98-	203714.81
	2	H2	11687.90		19.00-	11668.90	2417.76-	11.10-	2428.86-	9240.04
	2	P2	1789666.93	527169.85-	82964.03-	1179533.05	113025.27-	1458.38-	114483.65-	1065049.40
	2	R2	44973.25		87.26-	44885.99	2359.28-		2359.28-	42526.71
	2	T2	166085.20		4454.32-	161630.88	774.98-		774.98-	160855.90
	2	X2	511.35			511.35	511.35-		511.35-	511.35
HALF TOTALS=			2012924.63	527169.85-	87524.61-	1398230.17	118577.29-	1469.48-	120046.77-	1278183.40
DEPT TOTALS=			4276708.71	1054383.26-	182314.49-	3040010.96	1547405.35-	10707.40-	1558112.75-	1481898.21
PP TOTALS =			22918103.51	6317113.49-	696601.59-	15904388.43	14013740.19-	53116.84-	14066857.03-	1837531.40
COMP TOTALS=			22918103.51	6317113.49-	696601.59-	15904388.43	14013740.19-	53116.84-	14066857.03-	1837531.40

VDOT HIGHWAY SAFETY PROJECT

Residency Administrator Tommy Johnson will brief the Board on an alternative scope of work for the curve realignment on Hardy Road.



VDOT Call Center - 1-800-367-ROAD

South Hill Residency – Richmond District

LUNENBURGCOUNTY

BOS Meeting – September 12, 2019

Maintenance Forces

- Cleaned, repaired, and replaced pipes on various routes.
- Repaired shoulders on various routes.
- Cut limbs on various routes.
- Patched various routes with tar kettle.
- Mowed various intersections for sight distance.
- Checked various routes for maintenance and safety issues.
- Machined, hauled stone, and applied dust control on various NHS routes as needed.
- Performed litter patrol and routine maintenance on various routes.

Route 675, Hardy Road Horizontal Curve Realignment Project
Lunenburg Board of Supervisors Transportation Committee Meeting

September 5, 2019 3:00 PM

Curve Alternative Analysis:

Three curve alternatives were developed for the horizontal curve on Route 675, Hardy Road. The focus of the alternatives was to optimize safety and operations for all transportation modes, while providing innovative and low-cost options. Hardy Road operates with a statutory speed limit of 55 MPH; the curve operates with a curve advisory speed of 35 MPH. The existing curve has had four crashes over the past 13 years, with one fatality as a result of a run-off-road crash.

Alternative 2 proposed the following improvements:

- Widen the lane widths to 12-foot lanes
- Include 2-foot wide paved shoulders on both sides
- Remove or relocate fixed objects outside of the clear zone
- Include edge-line rumble strips
- Install curve warning pavement markings on both approaches
- Change the advisory speed to 30 MPH
- Install necessary signage improvements

The proposed alignment for Alternative 2 is very close to the existing alignment and will therefore have a more limited impact on property owners. A variable sight distance easement is proposed.

This alternative also provides the greatest Benefit to Cost ratio with a rating of 1.5 versus .9 for Alternative 1 and .1 for alternative 3.

Based on the safety analysis 73 % total crash reduction percentages are expected for Alternative 2. Crash Reduction percentages expected for Alternative 1 is 58 % and Alternative 3 is 10 %.

VDOT is seeking Lunenburg County concurrence moving forward with alternative 2 recommendations from Traffic Study for this project.

Curve Alternative Analysis

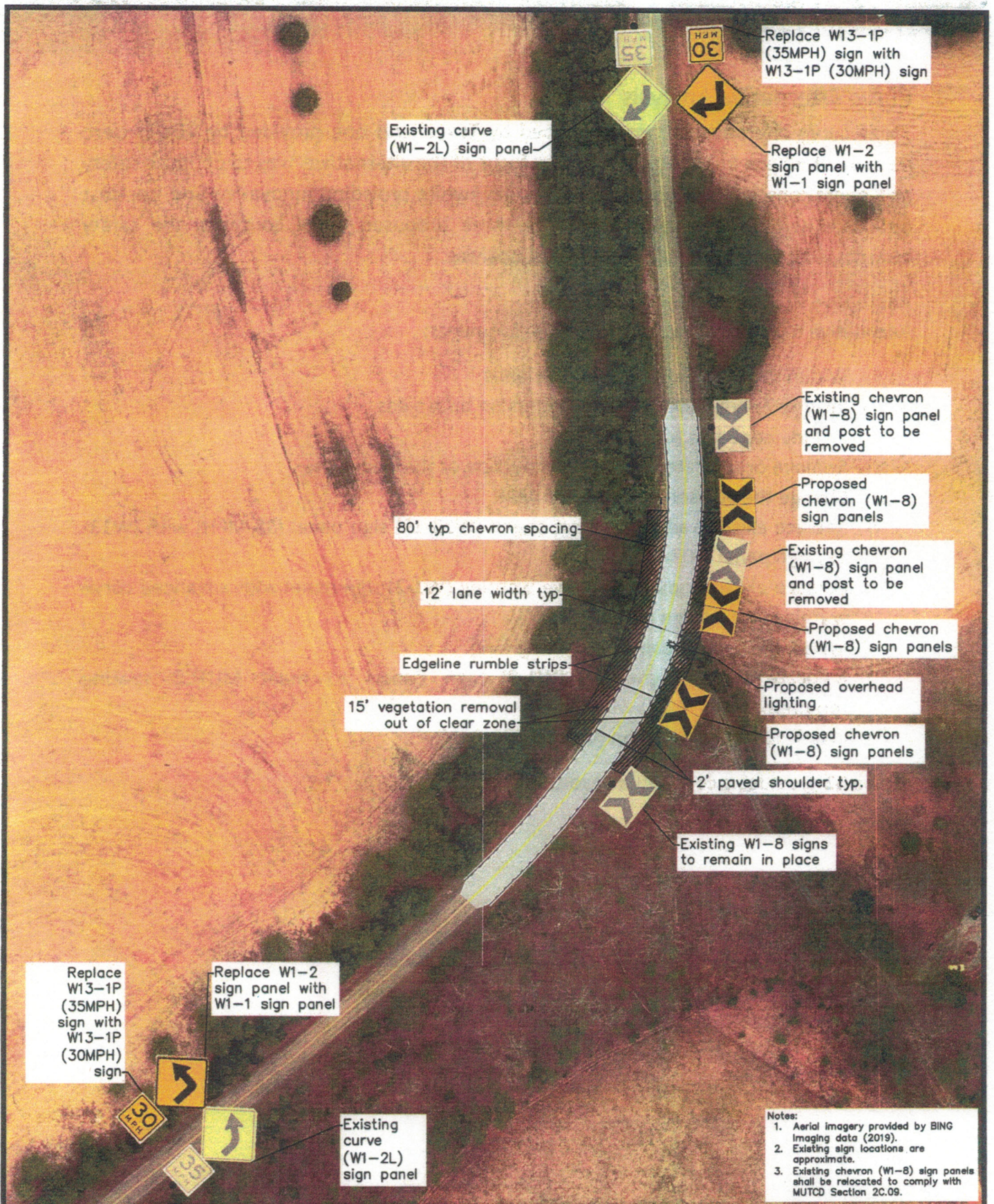
Three curve alternatives (two developed by Toxcel and one provided by VDOT) were developed for the horizontal curve. The focus of the alternatives was to optimize safety and operations for all transportation modes, while providing innovative and low-cost options. The following summarizes the three proposed curve concepts, the safety benefits, cost estimates, and benefit-cost analysis.

Alternative 1

Alternative 1 proposes the following improvements:

- Widen the lane widths to 12-foot lanes
- Include 2-foot wide paved shoulders on both sides
- Include edge-line rumble strips
- Remove or relocate fixed objects outside of the clear zone
- Change the advisory speed to 30 MPH
- Replace existing advisory curve speed (W13-1P) sign panel (35 MPH) with (W13-1P) sign panel (30 MPH)
- Replace existing advanced curve warning (W1-2) sign panel with advanced curve warning (W1-1) sign panel
- Install one cobra-head overhead lighting
- Relocate existing chevron (W1-8) sign panels to meet MUTCD spacing requirements
- Install additional chevron (W1-8) sign panel

Figure 11 provides a conceptual layout of Alternative 1.



Replace W13-1P (35MPH) sign with W13-1P (30MPH) sign

Replace W1-2 sign panel with W1-1 sign panel

Existing curve (W1-2L) sign panel

Existing chevron (W1-8) sign panel and post to be removed

Proposed chevron (W1-8) sign panels

Existing chevron (W1-8) sign panel and post to be removed

Proposed chevron (W1-8) sign panels

Proposed overhead lighting

Proposed chevron (W1-8) sign panels

2' paved shoulder typ.

Existing W1-8 signs to remain in place

80' typ chevron spacing

12' lane width typ

Edgeline rumble strips

15' vegetation removal out of clear zone

Replace W13-1P (35MPH) sign with W13-1P (30MPH) sign

Replace W1-2 sign panel with W1-1 sign panel

Existing curve (W1-2L) sign panel

- Notes:
1. Aerial imagery provided by BING Imaging data (2019).
 2. Existing sign locations are approximate.
 3. Existing chevron (W1-8) sign panels shall be relocated to comply with MUTCD Section 2C.09.

VDOT
JMT
toXcel, LLC

ENGINEER	David C. Cobb P.E. - 0402058170
SCALE	1" = 100'
CREATED BY:	DCC
DATE	June 2019

Figure 11: Alternative 1
Route 675 (Hardy Road)
Lunenburg, Virginia



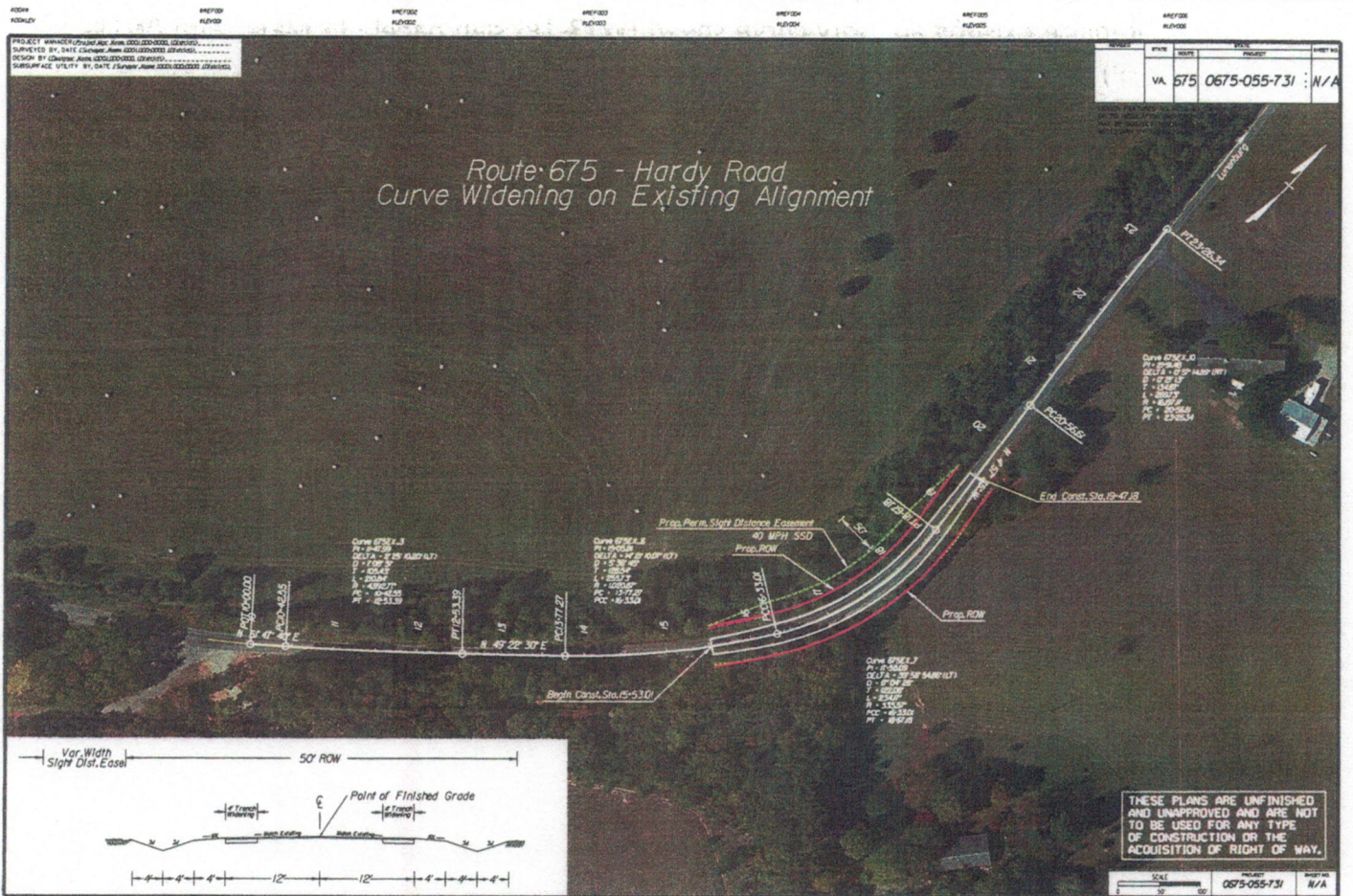
Alternative 2

Alternative 2 proposes the following improvements:

- Widen the lane widths to 12-foot lanes
- Include 2-foot wide paved shoulders on both sides
- Remove or relocate fixed objects outside of the clear zone
- Include edge-line rumble strips
- Install curve warning pavement markings on both approaches
- Change the advisory speed to 30 MPH
- Replace existing advisory curve speed (W13-1P) sign panel (35 MPH) with (W13-1P) sign panel (30 MPH)
- Replace existing advanced curve warning (W1-2) sign panel with advanced curve warning (W1-1) sign panel
- Relocate existing chevrons to meet MUTCD spacing requirements
- Install additional chevron (W1-8) sign panel

Figure 12 provides a conceptual layout of Alternative 2.

Figure 12: Alternative 2 Conceptual Layout



Alternative 3

Alternative 3 proposes the following improvements:

- Increase the width of the lanes to 11 feet
- Remove trees and regrade area along inside radius of curve to improve sight distance for drivers
- Realign the curve to include a large radius of 441 feet
- Include a 5-foot wide gravel shoulder along each side of the roadway
- Decrease design speed to 40 MPH

Figure 13 provides a conceptual layout of Alternative 3.

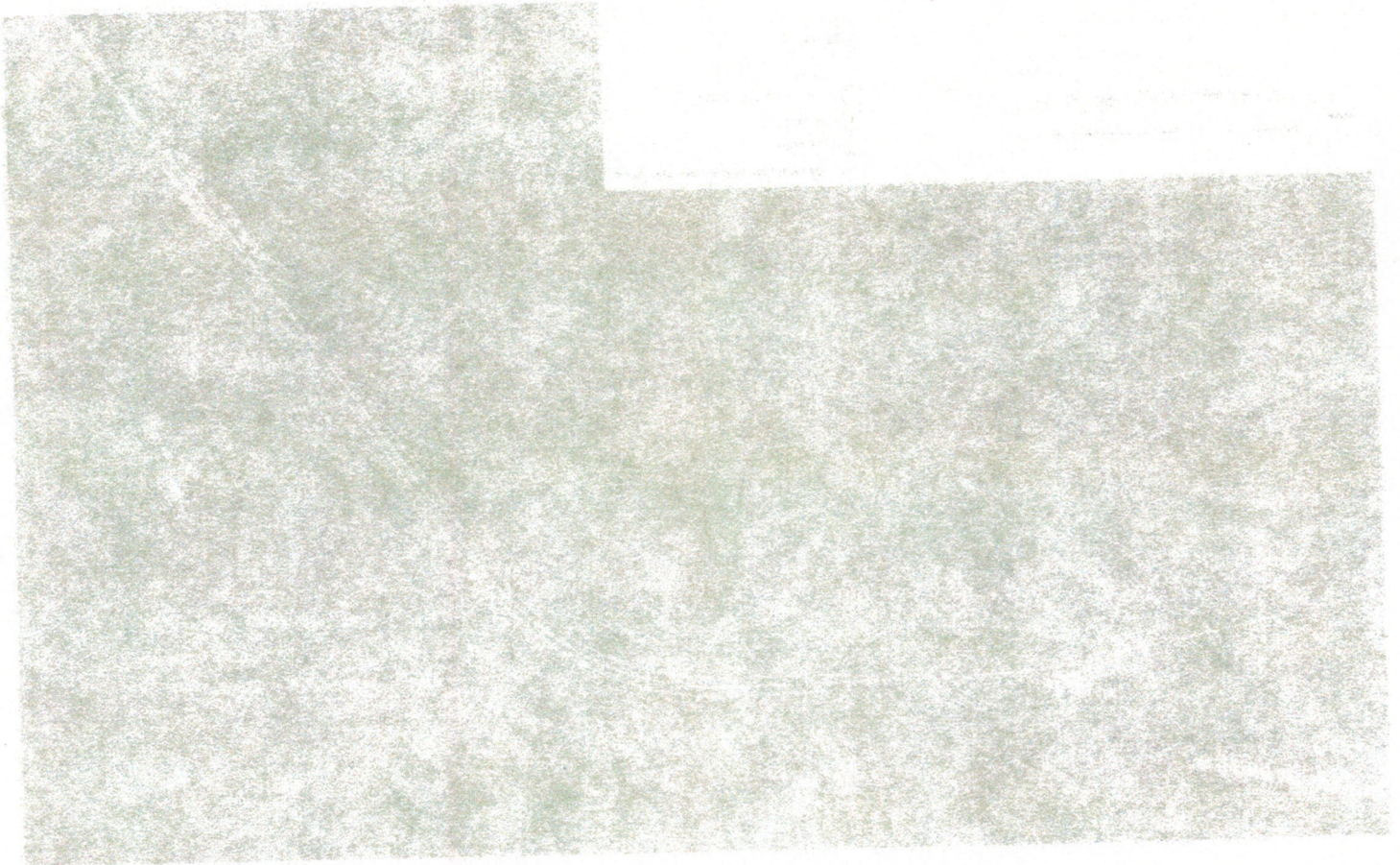
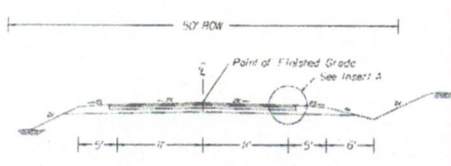
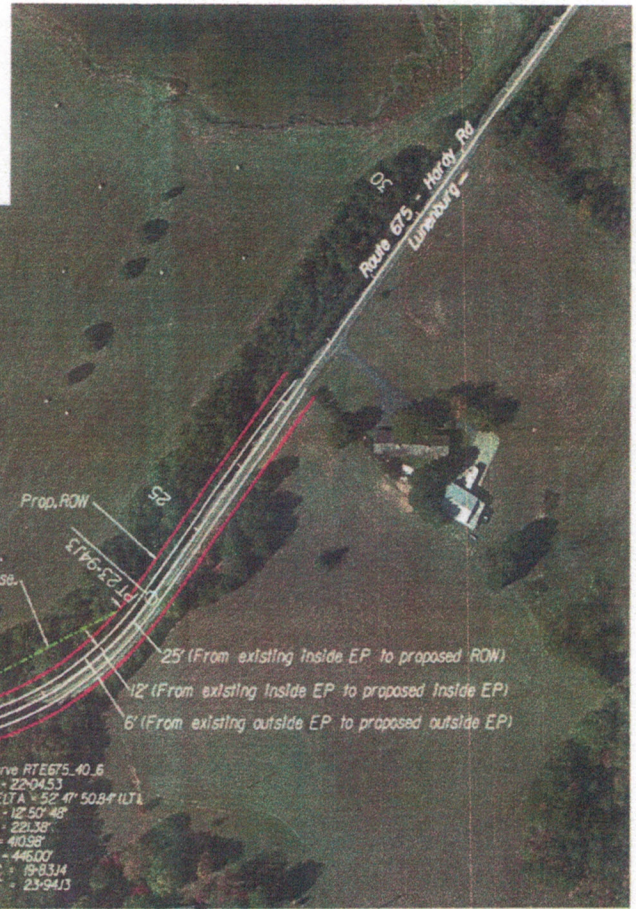


Figure 13: Alternative 3 Conceptual Layout

UPC 108886 - Route 675 (Hardy Road) - Lunenburg County - Curve Realignment - 40 MPH Design Speed



- Insert A
- (A) 12" SM 12.5A @ 220 lbs/5Y
 - (B) 2" 1H 19.0A
 - (C) 4" BM 25.0A
 - (D) 5" Aggregate Base Material Type 1 Size No. 21A



Route 659 - Old Manston Rd.

Results

A curve evaluation was conducted along Route 675 (Hardy Road). Hardy Road operates with a statutory speed limit of 55 MPH, the curve operates with a curve advisory speed of 35 MPH. The existing curve has had a total of four crashes over the past 13 years, with one fatality as a result of a run-off-road crash. Three alternative curve concepts were evaluated to determine improvements for the intersection. The following provides a summary of each scenario.

○ Alternative 1

▪ Proposed Conditions:

- Widen the lane widths to 12-foot lanes
- Include 2-foot wide paved shoulders on both sides
- Include edge-line rumble strips
- Remove or relocate fixed objects outside of the clear zone
- Change the advisory speed to 30 MPH
- Replace existing advisory curve speed (W13-1P) sign panel (35 MPH) with (W13-1P) sign panel (30 MPH)
- Replace existing advanced curve warning (W1-2) sign panel with advanced curve warning (W1-1) sign panel
- Install one cobra-head overhead lighting
- Relocate existing chevron (W1-8) sign panels to meet MUTCD spacing requirements
- Install additional chevron (W1-8) sign panel

- Crash Reduction: 58%
- Cost Estimate: \$573,830
- Benefit-cost Ratio: 0.9

○ Alternative 2

▪ Proposed Conditions:

- Widen the lane widths to 12-foot lanes
- Include 2-foot wide paved shoulders on both sides
- Remove or relocate fixed objects outside of the clear zone
- Include edge-line rumble strips
- Install curve warning pavement markings on both approaches
- Change the advisory speed to 30 MPH
- Replace existing advisory curve speed (W13-1P) sign panel (35 MPH) with (W13-1P) sign panel (30 MPH)

- Replace existing advanced curve warning (W1-2) sign panel with advanced curve warning (W1-1) sign panel
- Relocate existing chevrons to meet MUTCD spacing requirements
- Install additional chevron (W1-8) sign panel
- Crash Reduction: 73%
- Cost Estimate: \$419,081
- Benefit-cost Ratio: 1.5
- Alternative 3
 - Proposed Conditions:
 - Increase the width of the lanes to 11 feet
 - Remove trees and regrade area along inside radius of curve to improve sight distance for drivers
 - Realign the curve to include a large radius of 441 feet
 - Include a 5-foot wide gravel shoulder along each side of the roadway
 - Decrease design speed to 40 MPH
 - Crash Reduction: 10%
 - Cost Estimate: \$1,636,880
 - Benefit-cost Ratio: 0.1